

# Kualapu'u Public Conversion Charter School

Nurturing Our Children to Thrive in an Ever Changing World ~ E ola na pūa i ke ao huli au  
A Ho'okāko'o School



**T**he 'Ohana Fun Fair organized by our Pre-Kindergarten Parents kicks off the 10th Anniversary of Kualapu'u conversion to a charter school. On Saturday, September 6th, Kaunakakai town was left empty as cars lined the Kualapu'u town streets in Central Moloka'i. The 'Ohana Fun Fair, organized by the Pre-K Parents, was a celebration of the school's 10th anniversary as a charter school as well as an opportunity to give back to the community for its support of the school. Through business, community, and individual sponsors, the community enjoyed a Keiki Fitness Challenge, Keiki Pageant, pony rides, bouncy castle, face painting, community informational booths, food vendors, and game booths. Some say that easily 1,000 people came on the school's campus, making the 'Ohana Fun Fair Kualapu'u's biggest event in recent memory.

Kualapu'u Pre-K is an accredited program servicing its sixth class of 4 year-olds. The pre-school has been largely funded by private grants from Kamehameha School, and this current school year by a legislative grant in aid. The school continues to rely on community support to continue the free Pre-K program into future years.

**Pictured above from left to right** - Moloka'i High School "Mrs. Green and White" Catherine Merkel, Kualapu'u Keiki Pageant winners La'iku Landford (Jr Miss Comet), Kaipo Poaha-Treu (Little Master Comet), and Dailee Angco (Little Miss Comet), along with Moloka'i High School "Mr. Green and White" Edwin Greenleaf. Standing: Desire Cabalar, Pageant Coordinator.

## Upcoming 10th Anniversary Events

### Turkey Rainbow Run Saturday, November 29

A "Fun" raiser hosted by Kualapu'u School, Moloka'i Middle School, and Na Pu'uwai, a community based Native Hawaiian Health organization.

### Moloka'i Metric 100K Bike Ride

Sunday, January 18, Sunrise

Starting at Hotel Moloka'i, this is a fundraiser for our Pa'olo PE & 'Ike Hawai'i Programs

Sign up at:

<http://molokaimetric2015.eventbrite.com>

### Pre-Race Day Saturday, January 17

A 6 mile Family Bike ride, Spaghetti dinner and entertainment!!

### A Glass for Class Wine Tasting

Saturday, February 21  
Hotel Moloka'i

A fundraiser for Kualapu'u School hosted by Ho'okako'o Corporation

### May Day Friday, May 1

An evening performance at Kualapu'u concluding the year's 10th Anniversary celebration and a chance to thank for all of our supporters

Information for all of these events can be found on the school's website at [kualapuuschool.weebly.com](http://kualapuuschool.weebly.com) or call us at (808) 567-6900

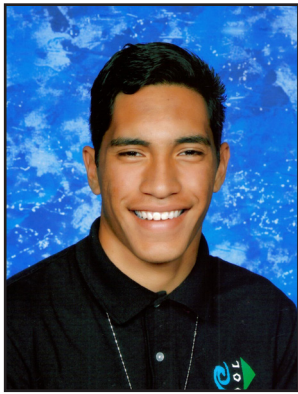
**We Hope You Will Join Us  
at Every Event!**

## ALUMNI CORNER

*Featuring Kualapu'u  
Alumni Future Stars*

### John Michael Duvauchelle Quarterback of Moloka'i High's 8 man football team

**John Michael Duvauchelle** is remembered by his 2nd quarter reading teacher, Ms. Loretta Labrador, as a student who was highly motivated and liked earning football stickers. Even in elementary school he was a great student with strong intrinsic motivation, and a model classmate and friend to other students. We are not surprised by John Michael's success as an athlete and leader of the team.



*John Michael Duvauchelle*

John Michael recently volunteered at the Kuapau'u's 'Ohana Fun Fair helping guide ponies and riders. With his background in rodeo and horses, he was a welcomed hand.

Good job John Michael.  
We are proud of you!

#### ***We would love to hear from you!***

**"Like" our Facebook page at Kualapu'u Public Conversion Charter School or add your contact information on our school board website at [www.hookakoo.org](http://www.hookakoo.org)**

## Kalei Adolpho & Clair Marie Anderson University Of Hawaii Na Wahine Volleyball Players

**Abbigale "Kalei" Adolpho** is a 6' 1" Senior on the UH volleyball team at the Middle Hitter Position. She graduated from both Kualapu'u and Moloka'i High Schools. Kalei was one of the tallest students on campus and remembers playing basketball during lunch recess with girls versus boys. "I remember collecting points for being good through the year so I could redeem them for a pizza or a pool party. One of my favorite teachers of all time was Kumu (Pualani) Akaka."



**Clair Marie Anderson** recently graduated from Punahou School and is a 5' 5" freshman Defensive Specialist on the UH team. Clair Marie attended Kualapu'u from Kindergarten through fourth grade, and eventually moved to Oahu. Her mom, Janet Anderson, was also a teacher at Kualapu'u. Clair Marie writes that, "Kualapu'u is where I made some of my fondest childhood memories. I remember my favorite teacher was Mrs. Kiyan my 1st grade teacher because she was one of the kindest people in the world and always made class fun. I also remember I used to always have trouble sleeping the night before May Day because I would be too excited! My favorite year was when my 3rd grade class danced to *Hawaiian Roller Coaster Ride* from Lilo & Stitch with boogie boards and inner tubes. Thank you so much! I'm honored to be included in this newsletter. I hope to see you soon!" *Photos courtesy of the University of Hawai'i.*

#### **Did you know?**

***Kualapu'u School is the largest Elementary School, only Charter School and only Elementary Hawaiian Language Immersion School on Moloka'i***

## Pū'olo

### A blend of Hawaiian values and Physical Education

Kualapu'u School has a unique educational offering that blends 'Ike Hawai'i with Physical Education. Pū'olo's mission is learning through movement, culture, local phenomena. The curriculum covers Values, Health & Wellness, Makahiki, Wahi Pana, and 'Ike/No'eau/Ahupua'a. Students are also taken on yearly field trips to one of seven wahi pana (special cultural places). Also unique to Pū'olo, is the semester swimming and mile run biathlons for Grades 4, 5 & 6th, emphasizing the values of perseverance and physical fitness.





## Verizon Grant Funds Grade 3 STEM Development

Kualapu'u School's Grade 3 teaching team, Earline Iaea, Catherine Aki, and Ka'Ala Fay Camara, has received training in STEM education, Science, Technology, Engineering & Math, thanks to a generous grant from the Verizon Foundation. Teachers were able to meet with Sue Forbes-Kikukawa, the school's Math & Science curriculum coordinator, to study, design, and then deliver STEM content lessons to their students.

The first lesson that the teachers created introduced students to the plant life cycle, specifically seed germination. Students measured and recorded data on seed germination and growth under ideal growing conditions over a ten-day period. After discussing results, students generated experimental questions on growing conditions that were then tested. As might be expected, students got pretty excited about their plant keiki experiments.



Plans are in place for students to study robotics beginning Quarter 2 with Miss Iaea's class. Students will learn how to build and program a NXT Lego robot. The six-week challenge will see which three-person team can build the best robot for planting seeds at a depth of 1", every 3½ inches.



## NEA Sends Kualapu'u 5th Graders to Coconut Island!

The National Education Association Foundation granted fifth grade teacher Diane Abraham \$5,000 for each of her proposed projects in 2012 and 2014. The proposals sought to engage students in critical thinking and problem solving that deepen their knowledge of standards-based subject matter.

With the second round of grant money last April, Ms. Abraham turned her fifth graders into Marine Biologists. First building a background of ocean life and food cycles in the water, the class then traveled overnight to Oahu to visit the Hawaii Institute of Marine Biology at Moku o Lo'e (Coconut Island) off of Kaneohe Bay on Oahu. The students experienced plankton night labs dockside and then back in the marine laboratory. They toured the island and its 64 surrounding acres of pristine coral reef, explored shark pools and other marine animals. The following afternoon, the Kualapu'u 5th grade Marine Biologists culminated their adventure at the Waikiki Aquarium to further explore the wonders of our oceans.



## Hawaiian Airlines Foundation Awards \$50,000 Grant to Kualapu'u

**H**awaiian Airlines Foundation has awarded a \$50,000 grant to Kualapu'u School for two new projects essential to the educational achievement of its students: Project Kuka'ike STEM Education Program and Project Kuakupono Student Support Services Program.

Project Kuka'ike STEM Education Program is a school-wide initiative to expand STEM education by preparing teachers to provide a robust, hands-on STEM (Science Engineering Technology & Math) education with a focus on the environment and agriculture that the children of Moloka'i can easily relate to.

The school's new Project Kuakupono Student Support Services Program was developed to close gaps in student support services through a coordinated, school-wide continuum of culturally-competent prevention and intervention services, faculty training in student support, and family outreach and community referrals.

"The Foundation allows Hawaiian Airlines to provide significant monetary support to programs that benefit our entire community," said Ann Botticelli, Senior Vice President of Corporate Communications and Public Affairs for Hawaiian Airlines and President of the Hawaiian Airlines Foundation. "We chose to focus on areas that are also important to our longevity as a local company. Our schools provide our future workforce, our host culture helps us differentiate ourselves as Hawai'i's hometown airline, and our environment provides our state's comparative advantage as a visitor destination."



### Kualapu'u Parent-Student Organization awards \$4,250 to Kualapu'u Teachers



The Kualapu'u Parent Student Organization awarded its own teachers with a total of \$4,250 to teachers to purchase supplies and materials for homeroom classes. Recognizing that the school had to make adjustments to its budget, the PSO wanted to make sure that teachers were still able to have the funds needed for special classroom purchases.

***Thank you to all who support  
our students and teachers!***

### We Wish To Thank Our Generous 2014 Ohana Fun Fair Sponsors and Donors

Kekau Aki, Zumba Instructor  
American Savings Bank  
Bank of Hawai'i  
Chong's Poi Shop, Inc.  
Coca Cola Refreshments of Moloka'i  
Coffees of Hawai'i  
County of Maui - Water Truck  
Rosie Davis  
Dean Chow, D.C.  
Bradford Duval  
EJ Lemonade  
Essence of 'Ohana, LLC/Faith K. Horner  
F&R Maintenance and Repairs  
First Hawaiian Homes FCU/Kalai Nae'ole, Branch Manager  
Donna Gamiao  
GT Auto Repair/Glen & Karen Takata  
Ho'opa'a Construction LLC/Mike & Katina Soares  
iCandie/Tarrah Horner  
J&J Productions  
Kalani 'Ohana  
Kamoi Snack-N-Go, Inc./Kimberly Svetin  
Frank & Roxanne Keoho  
Kualapu'u Market LTD  
Kydens Balloons/Janna Sasada  
Lena Blue Services/Wade & Leah Nakayama  
M.R. Variety  
Mahiai Ohana  
Makoa Trucking and Services, Inc./Christopher C. Mebille  
Mendija's Repair/Edwin Mendija  
Mid Pac Petroleum, LLC  
Moloka'i Bail Bonds  
Moloka'i Drugs, Inc./Kimberly Svetin  
Moloka'i Fire Department and Sparky  
Moloka'i Fish & Dive  
Moloka'i Police Department  
Moloka'i Porta Potties/Cheryl & Brent Davis  
Moloka'i Sea Farms/Mr. & Mrs. Steve Chaikin  
Monsanto Moloka'i Employee's Community Donation Program  
- Pii Augustiro, Chad Monday, Joann Bumatay, Manu Adolpho  
Na Pu'uwai  
Nat Bacon Builders/Mr. & Mrs. Nat Bacon  
Paniolo Keiki of Moloka'i  
Stanley M. Pau'ole  
The Reverend Abraham Kahu Akaka Ministries Foundation  
James Sherwood  
Jackie Skrocke  
Lydia Trinidad



Join the  
*Kualapu'u School*  
*2015 Annual Giving Drive*

*Founded in 1966 as a public school and converting to a charter school in 2004, Kualapu'u School is committed to "do more with less" and successfully providing our students with educational opportunities they would not otherwise receive. We do this while exceeding the same standards as other public schools.*

*Your tax deductible gift helps to ensure smaller class sizes, individualized instruction, teacher professional development, expanded science curriculum, daily Physical Education, longer school days, free breakfast and lunch, and much more for your child's success.*

*Join us in making sure our students experience the excitement of learning and academic success.*



*Mahalo!*

*Yes! I support the Kualapu'u School Annual Giving Drive*

NAME: \_\_\_\_\_

(If an alumnus, year graduated)

ADDRESS: \_\_\_\_\_ CITY \_\_\_\_\_ STATE \_\_\_\_\_ ZIP CODE \_\_\_\_\_

PHONE: \_\_\_\_\_ EMAIL: \_\_\_\_\_

**I PLEDGE MY SUPPORT OF:** ☐ \$25 ☐ \$50 ☐ \$100 ☐ \$250 ☐ \$500 ☐ \$1,000 **OTHER \$** \_\_\_\_\_

☐ I will pay my pledge in installments of \$ \_\_\_\_\_ ☐ Monthly ☐ Quarterly ☐ Semi-Annually ☐ Annually

Enclosed is \$ \_\_\_\_\_ towards my pledge

☐ My check is enclosed in the amount of \$ \_\_\_\_\_ (make check payable to Ho'okāko'o Corporation)

☐ Bill Me Later

☐ Charge my credit/debit card the amount of \$ \_\_\_\_\_ ☐ VISA ☐ MASTERCARD ☐ AMEX ☐ Discover EXP. DATE: \_\_\_\_\_

Card No.: \_\_\_\_\_ CCV: \_\_\_\_\_

SIGNATURE

DATE

☐ Please contact me regarding a gift or stock or other asset.

☐ My employer has a matching gift program and I have enclosed the appropriate form.

**Your gift is to benefit Kualapu'u School. Return completed form to Ho'okāko'o Corporation, P.O. Box 11685, Honolulu, HI 96828  
Ho'okāko'o Corporation is a nonprofit, 501(c)(3) organization. Your gift is tax-deductible to the full extent allowed by law.**

Ho'okāko'o Corporation  
Kualapu'u Public Conversion Charter School  
260 Farrington Highway  
Kualapu'u, Moloka'i, Hawai'i 96757



**10<sup>th</sup>**  
**Anniversary**  
*Charter Celebration*  
*in 2014-2015*

NONPROFIT  
ORGANIZATION  
U.S. POSTAGE  
**PAID**  
HONOLULU, HI  
PERMIT NO. 985

**ECRWSS**

*To our Friends of Kualapu'u School*

\*\*\*\*\* ECRWSSEDDM\*\*\*\*

**Postal Customer**

***Be part of our 10<sup>th</sup> Anniversary Charter Celebrations!***

*For more information call (808) 567-6900 or*

 *Like Us on Facebook!*

## WHAT ARE YOU DOING NOW?

Kualapu'u Alumni and former staff of Kualapu'u School, we would like to keep in touch with you!

What are you doing now? Where do you live? We would love to hear from you, and hear your stories of Kualapu'u School. "Like" our Facebook page (Kualapu'u Public Conversion Charter School) or add your contact information to our school board website: ***www.hookakoo.org***

## ENROLL IN KUALAPU'U!

Interested in learning more about exciting and innovative programs for your child's education? Come schedule a visit to see our campus.

***Please call us at 567-6900.***

**Who is Ho'okāko'o?** Ho'okāko'o Corporation is the local school governing board and the 501(c)(3) non-profit organization for Kualapu'u School, Waimea Middle School (Hawai'i Island), and Kamaile Academy (Wai'anae, O'ahu).

Visit ***www.hookakoo.org*** to learn more information.

## *Kualapu'u School 2015 Annual Giving Drive*

**Your support helps students receive:**

- FREE Breakfast, Lunch, and Snack Program for ALL STUDENTS
- Core Instruction in reading, math, science, and writing in BOTH English and Hawaiian languages
- A longer school day for Visual Arts, PE, and 'Ike Hawaii instruction
- Bus Transportation from East Moloka'i and Field Trips to Wahi Pani (Cultural Places)
- After School Enrichment - Snacks, Tutoring, Gardening, Violin, Year Book, for example
- Expanded Science instruction and professional development aligned to the Common Core Standards
- Pre-Kindergarten program

*Please Give Today*